

► Products
Overview

Products

For Heating, Cooling and Ventilation

► **Overview**



Applications



Hotels



Offices and Commercial Buildings



Showrooms and Sales Floors



Retail Chains



Commercial and Industrial Buildings



Warehouses and Logistics Buildings



Sports Halls and Indoor Riding Arenas



Churches and Historical Buildings



Nursery Schools and Schools



Residential Buildings

Functions



Heating



Cooling



Ventilation

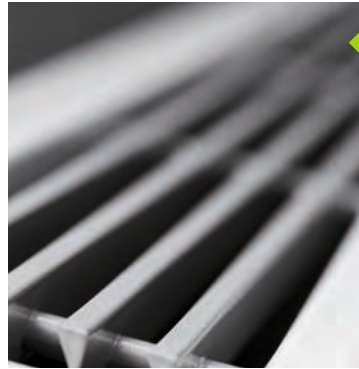
► Contents



1

Trench
Technology

Page 7



2

Perimeter
Heating

Page 13



3

Design Grilles

Page 19



4

Fan Coils

Page 23



Kampmann

Page 28

1

Trench Technology



Trench Technology

Indoor climate from the floor



Often heating and cooling units are visually unacceptable in front of the windows of modern commercial buildings. At the same time, demands are growing on the part of the users for improved air conditioning.

The wide range of products from the Katherm Trench Technology product line always offers the perfect solution. As the market leader in this segment, Kampmann offers a wide range of designs: from natural convection, different fan-assisted designs to special solutions, like displacement ventilation.

Supply air modules can be added to all Katherm versions above a height of 112 mm. The 400 mm long additional trenches supply conditioned primary air on demand to wherever it is needed.

With the Katherm QK nano, Kampmann offers a Trench Technology unit with smallest dimensions. The product group takes into account installations that impact on the design of the building, for instance by offering an extensive range of design grilles with different bar profiles, colours and materials. Moreover, the most diverse trench shapes are also possible.

In terms of control, the Trench Technology system can easily be integrated into modern BMS systems.

EC technology guarantees maximum energy efficiency. EC fans can be operated on-demand infinitely variably within a low fan speed range, even at low air volumes, with intelligent, integrated electronics and thus energy-efficiently. Low fan speeds have a positive effect on noise levels in areas, like offices, where the noise levels lie far below the audible threshold or the usual measuring range.

Overview



- 1 Katherm NK
- 2 Katherm QK
- 3 Katherm QK nano
- 4 Katherm HK
- 5 Katherm QL
- 6 Katherm QE

Trench Technology

Overview



	Article Group 1.45	Article Group 1.42	Article Group 4.42
Operation	<ul style="list-style-type: none"> ▶ natural convection ▶ Hydronic heating 	<ul style="list-style-type: none"> ▶ EC cross-flow fan convection ▶ Hydronic heating 	<ul style="list-style-type: none"> ▶ Hydronic heating ▶ EC cross-flow fan convection ▶ BMS (0-10 V)
Properties	<p>Heat output¹⁾ 78–5,590 W / 266–519,074 BTU</p> <hr/> <p>Trench height 92, 120, 150, 200 mm / 3.6, 4.7, 5.9, 7.9"</p> <p>Trench length 800–5,000 mm / 31.5–196.9"</p> <p>Trench width 137, 182, 232, 300, 380 mm / 5.4, 7.2, 9.1, 11.8, 15.0"</p>	<p>Heat output²⁾ 688–4,952 W / 2,348–16,897 BTU</p> <hr/> <p>Trench height 112 mm / 4.4"</p> <p>Trench length 1,000–3,200 mm / 39.4–126.0"</p> <p>Trench width 190, 215 mm / 7.5, 8.5"</p>	<p>Heat output²⁾ 539–2,461 W / 1,839–8,397 BTU</p> <hr/> <p>Trench height 70 mm / 2.8"</p> <p>Trench length 900–2,700 mm / 35.4–106.3"</p> <p>Trench width 165 mm / 6.5"</p>
Product features	<ul style="list-style-type: none"> ▶ performance-optimised ▶ shallower depths combined with high outputs ▶ fully adaptable to the building contours ▶ accessory Katherm modular system ▶ optional supply air trench can be added for various sizes ▶ Dummy sections, Custom lengths and continuous appearance possible 	<ul style="list-style-type: none"> ▶ whisper-quiet EC technology ▶ shallower depths and high outputs ▶ fully adaptable to the building contours ▶ accessory Katherm modular system ▶ optional supply air trench can be added for various sizes ▶ Dummy sections, Custom lengths and continuous appearance possible 	<ul style="list-style-type: none"> ▶ highly reduced dimensions ▶ with the usual whisper-quiet EC technology and high outputs ▶ new FineLine grille ▶ Dummy sections, Custom lengths and continuous appearance possible

¹⁾ with LPHW 75/65 °C, RT = 20 °C

²⁾ with LPHW 75/65 °C, RT = 20 °C, at 60% fan speed

³⁾ with CHW 6/12 °C, RT = 24 °C, 50% relative humidity at 60% fan speed



Article Group 1.43

Operation

- ▶ EC cross-flow fan convection
- ▶ Hydronic heating
- ▶ cooling with CHW
- ▶ 2 or 4-pipe system

Properties

Heat output²⁾

919–10,680 W / 3,136–36,442 BTU

Cooling output³⁾

267–1,645 W / 911–5,613 BTU

Trench height

Height 130 (5.1): 915 (36.0)

Height 160 (6.3): 950 (37.4)

Height 130 / 160 (5.1 / 6.3): 1,200 (47.2),
1,700 (66.9), 2,000 (78.7), 2,500 (98.4),
3,000 mm (118.1")

Height 210 (8.3): 950 (37.4), 1,200 (47.2),
1,350 (53.1), 1,850 (72.8), 2,250 mm (88.6")

Trench width

Height 130:320 mm (5.1:12.6")

Height 160:290 mm (6.3:11.4")

Height 210:360 mm (8.3:14.2")

Product features

- ▶ EC tangential fan, whisper-quiet and energy-efficient, optimised air flow and cascaded in the form of a continuous line of fans
- ▶ tangential fan is easy to remove
- ▶ condensate tray can be removed for ease of cleaning
- ▶ Eurokonus valve connection for fast installation
- ▶ accessory Katherm modular system
- ▶ optional supply air trench can be added for various sizes
- ▶ Dummy sections, Custom lengths and continuous appearance possible

Article Group 1.41

- ▶ targeted supply of conditioned air (displacement air)
- ▶ low-turbulence room ventilation with low discharge speed
- ▶ additional heating with LPHW

Heat output

381–801 W/m /

1,300–2,733 BTU

Trench height

130, 180, 230 mm /

5.1, 7.1, 9.1"

Trench length

project-related; minimum length
1,100 mm / 43.3"

Trench width

272, 310, 340, 400, 420 mm /
10.7, 12.2, 13.4, 15.7, 16.5"

- ▶ high-output convector for screening external glazing
- ▶ for the targeted supply of conditioned displacement air
- ▶ effective and low-turbulence stratified ventilation
- ▶ Dummy sections, Custom lengths and continuous appearance possible

Article Group 2.42

- ▶ heating with electrical element
- ▶ EC cross-flow fan convection
- ▶ high heat output at low sound pressure level
- ▶ for full space heating

Heat output

800–2,400 W /

2,730–8,189 BTU

Trench height

112 mm / 4.4"

Trench length

825, 1,250, 1,700 mm /
32.5, 49.2, 67.0"

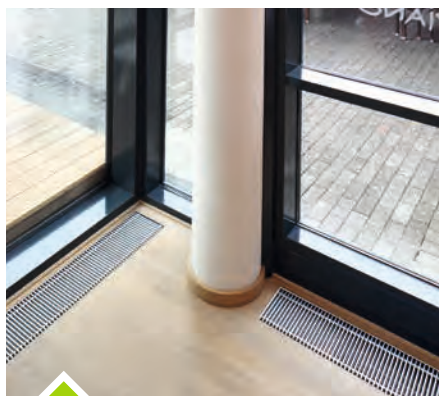
Trench width

207 mm / 8.2"

- ▶ 2-stage safety switch comprising safety thermostat and temperature fuse as protection against incorrect operation
- ▶ integral 0–100 % output control
- ▶ low surface temperatures
- ▶ easy control via room thermostat or BMS
- ▶ fast warm-up of the room
- ▶ Dummy sections, Custom lengths and continuous appearance possible

Trench Technology

At a glance



HK

Trench Technology for heating or cooling. EC cross-flow fan convection, whisper-quiet and energy-efficient.



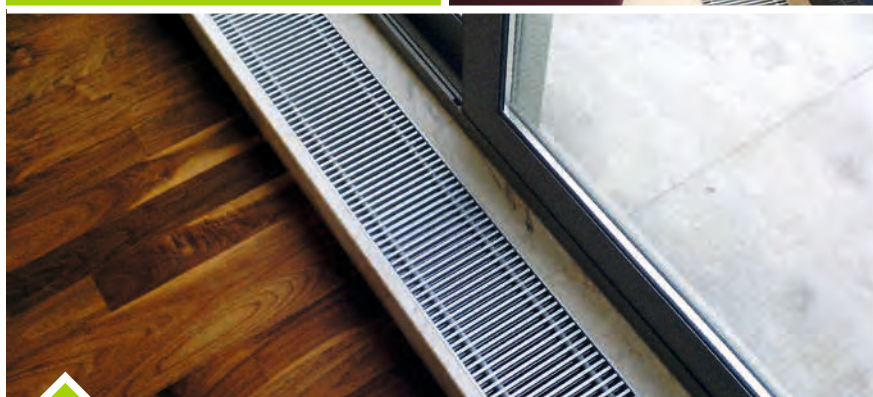
QE

EC tangential fan convection with electrical heating element.



HK

Heating and cooling as a 2-pipe and 4-pipe system.



NK

Natural convection all-purpose, individual, made-to-measure.



NK

Minimal dimensions, maximum output.





QK

Trench Technology with EC cross-flow fan convection. Optimised for ultra low water temperatures.



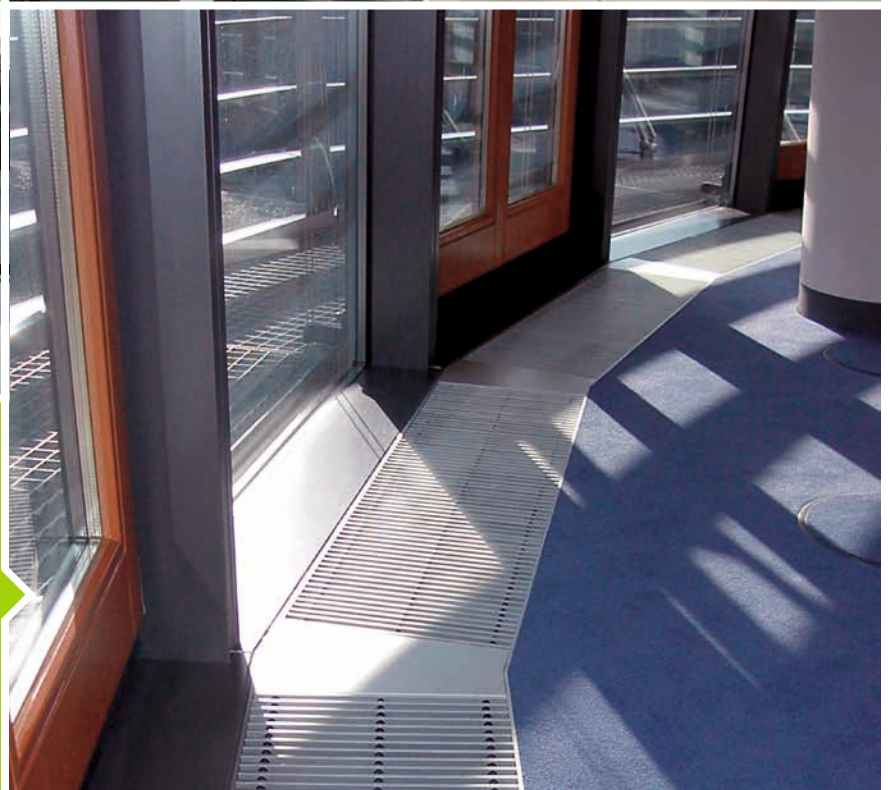
QK nano

Top performance from smallest dimensions, with filigree FineLine grille.



QL

Trench heating with integral displacement ventilation system. For draught-free displacement ventilation.



2

Perimeter Heating



Perimeter Heating

Multi-functional, durable, highly responsive



Uncased or cased, wall-mounted or free-standing encased convectors: Kampmann convectors meet the most exacting design requirements. They blend seamlessly into the interior style both in residential and commercial buildings.

Steel convectors release their high heat output when encased. At the same time, they are extremely robust and durable, and thus meet customers' high demands in terms of service life and performance.

The steel convectors are galvanised for optimum corrosion protection using state-of-the-art production methods. It is undisputed in the trade that convectors also offer a practical solution for use with low water temperatures.

Kampmann also produces made-to-measure sill casings and trenches including accessories on request, thus offering professional solutions for the most diverse requirements.

PowerKon + W and PowerKon + F encased convectors with PowerKon copper/aluminium heat exchanger represent the functional and cost-effective version for effective heating. Systematic design meets a compact construction with low heights and depths.

The low water content results in short heating-up times and accurate controllability. Modern galvanising and sheet steel casing guarantee corrosion protection even in challenging environments.

Overview



1



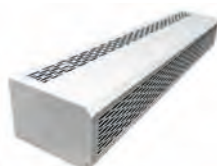
2



3



4



5

- 1 PowerKon + F
- 2 PowerKon + W
- 3 PowerKon nano
- 4 Baseboard QK
- 5 Baseboard HK

Perimeter Heating

Overview



Article Group 1.26

Operation

- ▶ Hydronic heating
- ▶ natural convection

Heat output ¹⁾

222–3,676 W / 757–12,543 BTU

Properties

Height

80, 130 mm / 3.1, 5.1"

Length

600–2,600 mm / 23.6–102.4"

Depth

130, 180, 230 mm / 5.1, 7.1, 9.1"

Applications

Air outlet

- ▶ linear grille with C-shaped profile

Colour

- ▶ standard RAL 9016,
- ▶ other colours on request
- ▶ functional, value-for-money model for the visually appealing use of convectors, for instance for installation along the facade of the building
- ▶ free-standing installation
- ▶ available in a continuous configuration with dummy

Article Group 1.26

- ▶ Hydronic heating
- ▶ natural convection

Heat output ¹⁾

176–6,768 W / 601–23,093 BTU

Height

250, 400, 550, 700 mm / 9.8, 15.7, 21.7, 27.6"

Length

600–2,600 mm / 23.6–102.4"

Depth

70, 120, 170, 220 mm / 2.8, 4.7, 6.7, 8.7"

Air outlet

- ▶ perforated profile
- ▶ linear grille with C-shaped profile

Colour

- ▶ standard RAL 9016,
- ▶ other colours on request
- ▶ for the encased use of convectors
- ▶ available in two different design models
- ▶ wall-mounted
- ▶ available in a continuous configuration with dummy sections and mitred corners

¹⁾ with LPHW 75/65 °C, RT = 20 °C



	Article Group 1.34	Article Group 1.32	Article Group 1.33
Operation	<ul style="list-style-type: none"> Hydronic heating heating with PWW 	<ul style="list-style-type: none"> Hydronic heating cross-flow fan-assisted convection EC fan BMS (0–10 V) 	<ul style="list-style-type: none"> Hydronic heating cross-flow fan-assisted convection wet cooling EC fan 2- or 4-pipe system BMS (0–10 V)
Properties	<p>Heat output²⁾</p> <p>610–2,320 W / 2,081–7,916 BTU</p> <hr/> <p>Height</p> <p>160 mm / 6.3"</p> <p>Length</p> <p>950, 1,150, 1,400, 1,800, 2,150 mm / 37.4, 45.3, 55.1, 70.9, 84.6"</p> <hr/> <p>Air outlet</p> <ul style="list-style-type: none"> FineLine steel grilles powder-coated or stainless steel <p>Colour</p> <ul style="list-style-type: none"> standard DB 703 <hr/> <ul style="list-style-type: none"> functional version for use in front of facades free-standing installation visually attractive due to FineLine grille available in a continuous configuration with dummy sections and mitred corners 	<p>Heat output²⁾</p> <p>293–1,817 W / 1,000–6,200 BTU</p> <hr/> <p>Height</p> <p>215 mm / 8.5"</p> <p>Length</p> <p>850, 1,050, 1,250, 1,450, 1,650, 1,800, 2,000, 2,200, 2,400, 2,600, 2,800, 3,000 mm / 33.5, 41.3, 49.2, 57.1, 65.0, 70.9, 78.7, 86.6, 102.4, 110.2, 118.1"</p> <p>Depth</p> <p>100 mm / 4.0"</p> <hr/> <p>Air outlet</p> <ul style="list-style-type: none"> perforated profile <p>Colour</p> <ul style="list-style-type: none"> standard RAL 9016, other colours on request <hr/> <ul style="list-style-type: none"> suitable for commercial and residential buildings for use with ultra-low water temperatures ideal where ceiling space is not available low-profile unit for discreet installation 	<p>Heat output²⁾</p> <p>322–2,051 W / 1,099–6,998 BTU</p> <p>Cooling output³⁾</p> <p>234–1,436 W / 798–4,900 BTU</p> <hr/> <p>Height</p> <p>170 mm / 6.7"</p> <p>Length</p> <p>1,000, 1,200, 1,700, 2,000, 2,500, 2,600, 3,000 mm / 39.4, 47.2, 67.0, 78.7, 98.4, 102.4, 118.1"</p> <p>Depth</p> <p>235 mm / 9.3"</p> <hr/> <p>Air outlet</p> <ul style="list-style-type: none"> perforated profile <p>Colour</p> <ul style="list-style-type: none"> standard RAL 9016, other colours on request <hr/> <ul style="list-style-type: none"> for residential use, commercial refurbishment or new-build applications discreet convector for heating and cooling where FCUs do not fit cooling-only, heating-only or heating/cooling systems
Applications			

²⁾ with LPHW 49 / 38 °C, RT = 21 °C, at 80% fan speed

³⁾ with CHW 7 / 12 °C, RT = 24 °C, 50% relative humidity, at 80% fan speed

Perimeter Heating

At a glance



PowerKon + F

The free-standing encased model with PowerKon heat exchanger.

PowerKon + F

Free-standing convector for use with low water temperatures.



PowerKon nano

Free-standing convector with EC cross-flow fan convection. Flat, delicate, restrained in front of floor-height windows.





PowerKon + W

Wall-mounted convector for low water temperatures.



PowerKon + W

The wall-mounted encased model with PowerKon heat exchanger.



Baseboard HK

Discreet baseboard solution for fan-assisted heating & cooling, where FCUs do not fit.



Baseboard QK

Low-profile high performance convector with EC fans for heating with ultra-low water temperatures.

3

Design Grilles



Design Grilles

For modern buildings



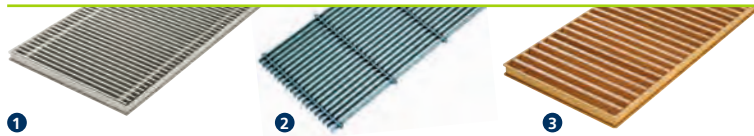
For some years now, the trend in modern architecture has been to actively incorporate required operating systems into the overall interior design. Kampmann design grilles take this development into account.

The wide range of materials and colours open up numerous design options. In terms of metal, the available finishes range from aluminium to brass and stainless steel. Oak, beech, maple and merbau offer four wooden grilles to create an individual homely impression.

Thanks to the many projects that Kampmann has already completed, we are able to call on an extensive stock of special solutions, like different angles, curves, adjustments to pass around columns and polygonal connections, recesses, mitred corners and many more.

Kampmann will take care of everything, from site measurements to delivery.

Overview

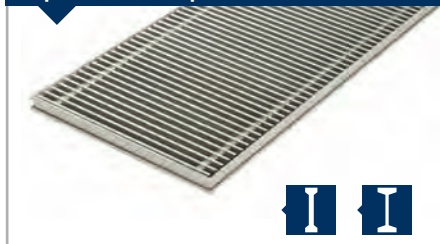


- ① Optiline Roll-up Grilles
- ② Optiline Linear Grilles
- ③ Wooden Roll-up Grilles

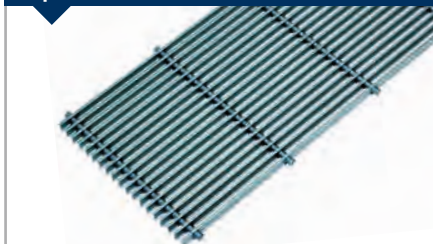
Design Grilles

Overview

Optiline Roll-up Grilles



Optiline Linear Grilles



Wooden Roll-up Grilles



Article Group 1.30		Article Group 1.30		Article Group 1.30	
Colours *)	Aluminium <ul style="list-style-type: none"> ▶ natural anodised E6/EV1 ▶ brass anodised E6/EV3 ▶ bronze anodised E6/C34 ▶ black anodised E6/C35 ▶ light bronze finish E6/C31 ▶ basalt grey coated (DB 703) ▶ white coated Stainless Steel <ul style="list-style-type: none"> ▶ natural ▶ polished Brass <ul style="list-style-type: none"> ▶ natural CuZn 44 		Aluminium <ul style="list-style-type: none"> ▶ natural anodised E6/EV1 ▶ brass anodised E6/EV3 ▶ bronze anodised E6/C34 ▶ light bronze finish E6/C31 		Oak <ul style="list-style-type: none"> ▶ natural lacquered ▶ oiled Beech <ul style="list-style-type: none"> ▶ natural lacquered ▶ oiled Maple <ul style="list-style-type: none"> ▶ natural lacquered ▶ oiled Merbau <ul style="list-style-type: none"> ▶ natural lacquered ▶ oiled
	Profiles <ul style="list-style-type: none"> ▶ double T-profile in aluminium, brass bar spacing 9 mm / 0.3" ▶ double T-profile, stainless steel bar spacing 10.5 mm / 0.4" Free area <ul style="list-style-type: none"> ▶ approx. 65% 		Profiles <ul style="list-style-type: none"> ▶ double T-profile in aluminium, brass bar spacing 9 mm / 0.3" ▶ double T-profile, stainless steel bar spacing 10.5 mm / 0.4" Free area <ul style="list-style-type: none"> ▶ approx. 65% 		Profiles <ul style="list-style-type: none"> ▶ solid wooden profile bar spacing 17 mm / 0.7" Free area <ul style="list-style-type: none"> ▶ approx. 60%
	Special features <ul style="list-style-type: none"> ▶ Optiline grilles stand out on account of their slim bar profiles whilst retaining a narrow bar spacing. This creates an attractive appearance whilst ensuring the correct free area in terms of air flow. ▶ both sides of the grille can be used 		Special features <ul style="list-style-type: none"> ▶ Optiline grilles stand out on account of their slim bar profiles whilst retaining a narrow bar spacing. This creates an attractive appearance whilst ensuring the correct free area in terms of air flow. ▶ both sides of the grille can be used 		Special features <ul style="list-style-type: none"> ▶ wooden roll-up grilles accentuate a warm and homely atmosphere indoors

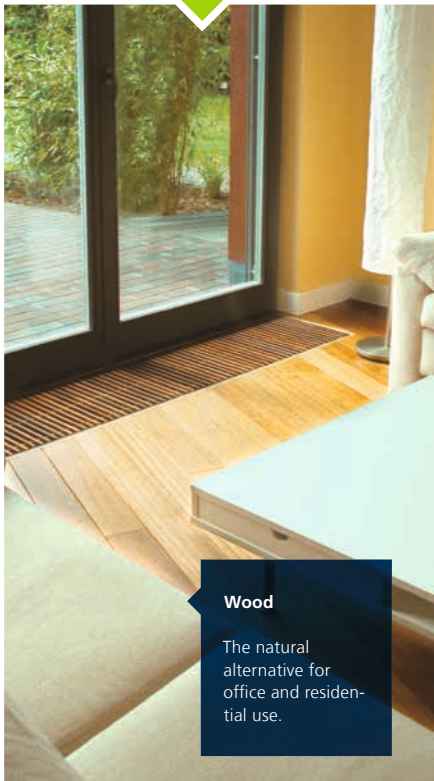
*) The colours of the grilles shown here may be distorted in printing and thus do not represent an exact reproduction of the original colour.



At a glance

Wooden Roll-up Grilles

Warm and homely – decorative wooden covers.



Wood

The natural alternative for office and residential use.



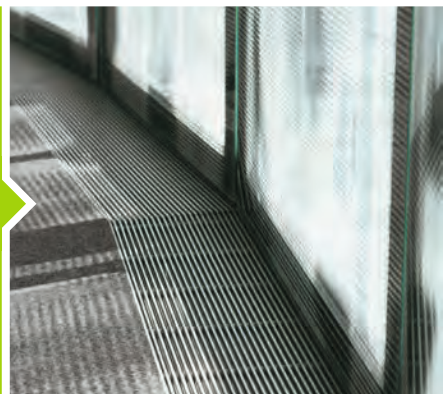
Optiline Roll-up Grilles

Ultra-elegant narrow-spaced air outlets.



Optiline Linear Grilles

The design grilles.



4

Fan Coils



Fan Coils

Decentralised heating and cooling for almost every requirement



Fan coils are high-quality decentralised units for heating and cooling and are used in many different kinds of buildings. They are predominantly installed in hotels, offices and public buildings, but are equally suitable for other commercial buildings. Their extensive range, comprising traditional fan convectors, cassette units, wall-mounted units and the innovative, offer an appropriate solution for almost every requirement.

Fan coils run primarily with LPHW or CHW and thus combine an energy distribution free of refrigerant with individual heat and cooling transfer in the room. A range of different designs offers maximum flexibility. Alongside wall- and ceiling-mounted units with designer casings, there are also models for installation in suspended ceilings or under the ceiling.

The outstanding workmanship of the components, sound-optimised housings and fans, as well as the low-maintenance construction of the fan coil units, combine to provide a high degree of safety for operators and users alike.

Optimum control options and their ease of use make fan coils an efficient element in every heating and cooling system. Connection to an on-site BMS is also possible.

Overview



- 1 Venkon
- 2 KaDeck
- 3 Ceiling HK
- 4 Wall HK

Fan Coils

Overview

Venkon



KaDeck



Article Group 1.48

Properties

Casing

- › flexible combination by basic unit and casing
- › the quietest on the market
- › casing in slim design in all common RAL colours
- › easy to install
- › filter options from MERV 4 to MERV 13

Fan

- › infinitely variable EC fans

Heat exchanger

- › 2- or 4-pipe unit

Article Group 3.26

Casing

- › optimised model for dry or wet cooling
- › discreet and elegant designer panel
- › simple maintenance, no requirement for additional access openings, no visible latches
- › all visible parts powder-coated, different colours on request

Fan

- › infinitely variable EC fans

Heat exchanger

- › 2-pipe unit

Features

Heating

- › Hydronic

Cooling

- › CHW

Cooling output ¹⁾

- › 0.88–9.52 kW / 3,003–32,484 BTU

Heat output ²⁾

- › 1.82–22.12 kW / 6,210–75,477 BTU

Control options

- › EC variation: 0–10 V control

Installation options

- › exposed, recessed or concealed

Variations

- › available in four sizes

Accessories

- › 2- or 4-way valve kit
- › optional condensate pump kit
- › condensate tray as standard

Heating

- › Hydronic

Cooling

- › CHW

Cooling output ¹⁾

- › 579–3,114 W (wet cooling) / 1,976–10,625 BTU

Heat output ²⁾

- › 743–3,755 W / 2,535–12,813 BTU

Control options

- › BMS (0–10 V)

Installation options

- › within suspended ceiling, below the ceiling, at the perimeter or in the centre of the room

Variations

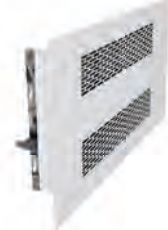
- › available in four versions (dry or wet cooling)
- › Check with Marcel Rakers which options are being certified

Accessories

- › optional flexible hose kits
- › optional primary air duct collar
- › optional dew point monitor sensor
- › check with Marcel Rakers re dew point sensor

¹⁾ with CHW 7/12 °C, EAT = 27 °C, 48% relative humidity

²⁾ with LPHW 75/65 °C, RT = 20 °C

**Ceiling HK****Wall HK****Article Group 3.22****Properties****Casing**

- ▶ slimline convector for discreet ceiling installation
- ▶ linear aluminium outlet grille/frame

Fan

- ▶ infinitely adjustable EC fans

Coil

- ▶ 2- or 4-pipe unit
- ▶ copper/aluminium

Features**Heating**

- ▶ Hydronic

Cooling

- ▶ CHW

Cooling output¹⁾

- ▶ 908–3,077 W / 3,098–10,799 BTU

Heat output²⁾

- ▶ 1,348–4,542 W / 4,600–15,498 BTU

Control options

- ▶ BMS (0–10 V)

Installation options

- ▶ within suspended ceiling

Variations

- ▶ available in eight sizes

Article Group 3.21**Casing**

- ▶ super slim designer panel for recessed mounting or optional casing for surface mounting
- ▶ galvanised steel casing powder coated to any RAL colour

Fan

- ▶ infinitely adjustable EC fans

Coil

- ▶ 2- or 4-pipe unit
- ▶ copper/aluminium

Heating

- ▶ Hydronic

Cooling

- ▶ CHW

Cooling output¹⁾

- ▶ 908–3,077 W / 3,098–10,799 BTU

Heat output²⁾

- ▶ 1,348–4,542 W / 4,600–15,498 BTU

Control options

- ▶ BMS (0–10 V)

Installation options

- ▶ wall-mounted
- ▶ wall-recessed with grilles/ front-panel or surface mounted with casing

Variations

- ▶ available in eight sizes

¹⁾ 2-pipe units with CHW 7 / 12 °C, EAT = 24 °C, 50 % relative humidity, at 80 % fan speed

²⁾ 2-pipe units with LPHW 49 / 38 °C, RT = 21 °C, at 80 % fan speed

Fan Coils

Overview



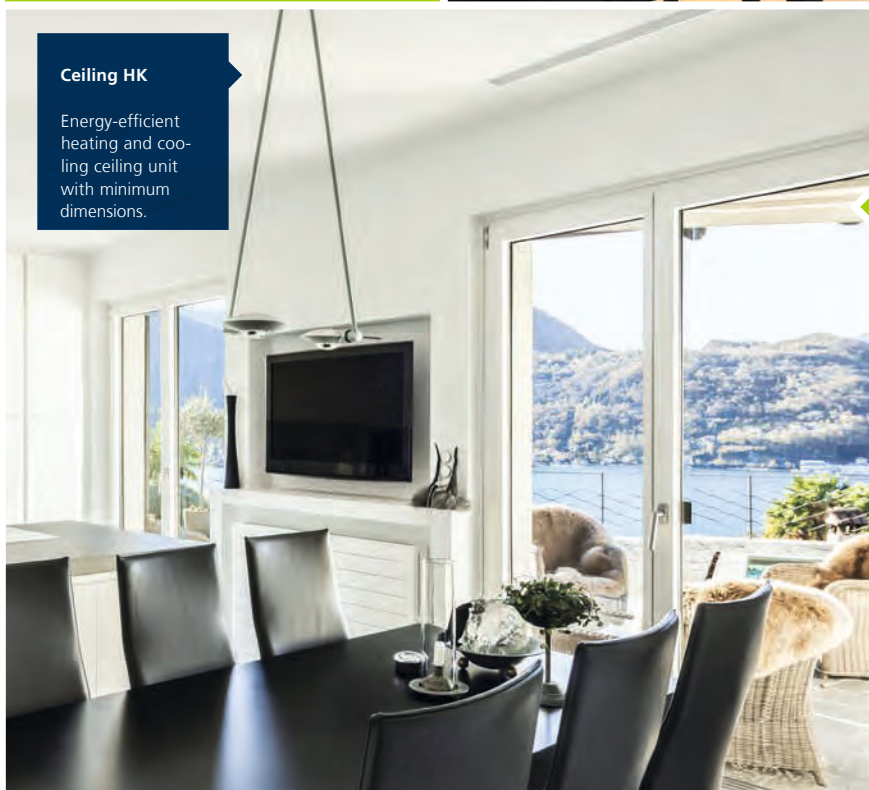
Venkon

Sickle blade
whisper-quiet fan.



Venkon

Forceflow, FCU, recirculating air.
Heating, cooling and filtering with
maximum comfort.

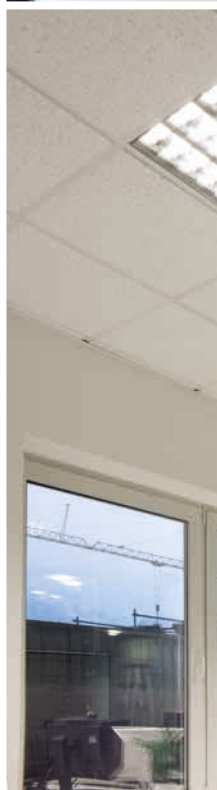


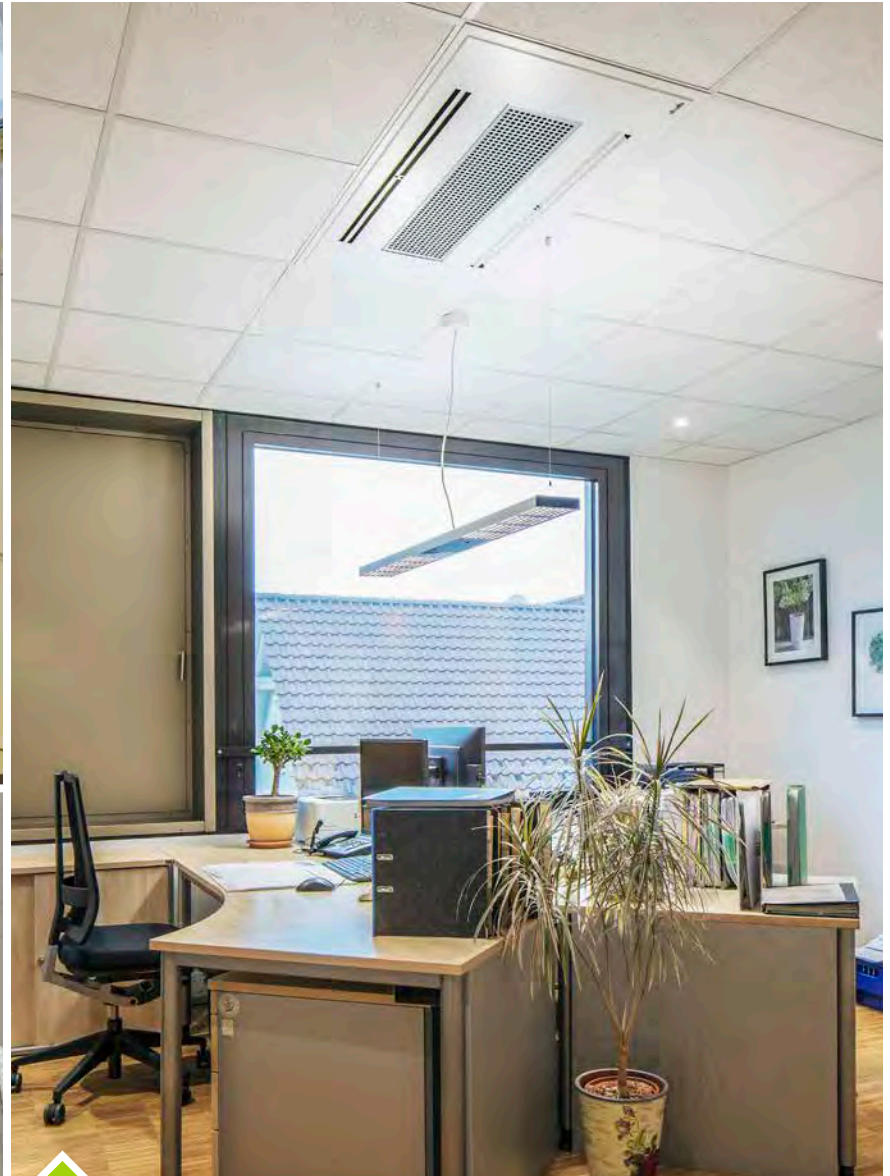
Ceiling HK

Energy-efficient
heating and cooling
ceiling unit
with minimum
dimensions.

Wall HK

Wall-mounted slimline convector for
fan-assisted heating and
cooling.





KaDeck

Versatile ceiling-mounted air conditioning system for use in commercial buildings.



Kampmann. Genau mein Klima.

With over 950 employees at 16 locations around the world, Kampmann is one of the major players in the construction and building services industries. Kampmann systems for heating, cooling and ventilation are at the forefront of different market segments today.

Innovation and the ultimate quality standards in all divisions reinforce this success for the future as well.

Our customers attach importance to working with reliable partners rather than with interchangeable suppliers. We can state clearly and succinctly why Kampmann is such a reliable partner: **Genau mein Klima – “Precisely my kind of climate”**

Precisely:

The precision with which Kampmann adapts its solutions to customers' requirements.

My:

The individual approach Kampmann offers its customers.

Kind of climate:

The partnership-based atmosphere that customers and suppliers alike experience with Kampmann.





Consistently there.

Kampmann.
Genau mein Klima.

Wherever our customers and partners need us: we are there. Around the corner. Around the globe. On the web. We are there transforming today's challenges into tomorrow's solutions. We are there when the standards and norms of the future are defined. Down-to-earth, attentive, available at any time. And always ready to go the extra mile

Consistently cooperative.

Kampmann.
Genau mein Klima.

We believe that fairness is the best foundation for sustainable success. That a handshake can mean more than a 100-page contract. And that mutual respect comes from seeing eye-to-eye. This is the way we are – and this is how we interact, with our customers, with our suppliers, with each other: a cordial and sincere invitation to genuine partnership.

Consistently sophisticated.

Kampmann.
Genau mein Klima.

We leave nothing to chance. Including the future. We check and recheck. We enhance and optimise. And we don't let go until we are thoroughly satisfied. With a love for detail that is only rivalled by our passion for thinking in systems, we maintain and nurture our spirit of discovery and invention that drives us from good ideas to useful products.

Consistently solution-focused.

Kampmann.
Genau mein Klima.

A hotel needs a different climate than a retail outlet. And when the southern side of an office block needs to be cooled down, the north may still need warming up. Our customers' requirements are highly specific. So are our solutions. Which means that even the trickiest challenges have a predictable (and most satisfying) outcome: We turn complexity into clarity – and create the perfect climate.

Kampmann as a Family Company

One person – one product: Kampmann GmbH has continuously evolved since the company was set up in 1972.

With its vision and keen insight into future markets, Kampmann GmbH grew to become one of the leading international specialists in heating, cooling, ventilation and integrated building automation. The company is still family-owned and, now in its second generation, is managed by Hendrik Kampmann.

The company focuses on customer satisfaction. Some 56 external sales representatives are out on the road in Germany and across the globe for our customers. Together with staff in the 16 (inter-) national representative offices, they provide customers with qualified professional advice on site.

Our customer service team in the Lingen Service Centre supports customers with 28 internal employees. There is a further employee in our Munich Service office handling any problems that might arise. Germany-wide, we also maintain 50 Service Centres and, internationally, our customers can call upon Kampmann Customer Service at 28 Service Centres in twelve countries.



Company founder Heinrich Kampmann and the present Managing Director Hendrik Kampmann.

Corporate Group



Traditionally, Kampmann's expertise has focused on series production with an extraordinary variety of options, as well as on visually attractive, custom-made, project-based solutions.

Outstandingly well-trained, skilled personnel in our three factories produce Kampmann-quality products for customers around the world. In addition to the company's headquarters in Lingen/Lower Saxony, housing administration and production, Kampmann Group has two further production sites in Baden-Württemberg, Germany and in Łęczyca, Poland.

In the spring of 2011, Kampmann acquired a majority stake in NOVA Apparate GmbH, Donaueschingen. NOVA serves ventilation manufacturers with centralised units. Centralised and decentralised air conditioning and ventilation technology grow together.

Kampmann UK Ltd., established in 2013, is responsible for the sale and distribution of Kampmann HVAC products in the United Kingdom.

Kampmann Heating, Cooling, Ventilation Ltd. has been operating in Canada since January 2016 and is responsible for selling Kampmann HVAC products in the USA and Canada. The company's head office is located in Vancouver, British Columbia.

emco Klima GmbH has been working as part of the Kampmann group of companies since 2018, which provides an environment clearly focussed on the building services sector for the company's knowledge and expertise in air outlets, decentralised ventilation systems, chilled ceilings and controls.

Exciting synergies become possible through the cooperation of professionals in the merged companies. All customers benefit from this and can now access even more comprehensive and coordinated system solutions.



Nova-klima.de



Emco-klima.com



◀ **Kampmann GmbH head office in Lingen (Ems)**

- ▶ development, production, final assembly and sale of virtually all product groups
- ▶ Research & Development Centre
- ▶ approx. 62,000 m² production area



▲ **KAMPMANN Polska Sp. z o.o.**

- ▶ production of unfinished and finished products for heating, cooling and ventilation systems
- ▶ in addition to finished products for the regional market, a large proportion of the production output is sent to the German main factory in Lingen for further processing
- ▶ approx. 8,300 m² production area

Research & Development Centre



The company's own Research & Development Centre is one of the most modern of its kind.

The R & D Centre (FEC) enables the company to

- ▶ develop new standard products
- ▶ continually improve its products
- ▶ undertake applied research
- ▶ provide detailed analysis of the units to be tested
- ▶ undertake standard tests.

Major investment requires performance that can be tested. That is what we offer our customers in our in-house R & D Centre (FEC) adjacent to our headquarters in Lingen. Built in June 2008, with an investment of approx. four million €, it is one of the most modern facilities of its type in Europe.

The multifunctional design of the building with a floor area of approx. 1,200 m² houses an air flow laboratory, a multi-purpose laboratory and a sound chamber.

The technically state of the art fit-out of the laboratory, which also houses a test chamber, two climate simulation units and a climate chamber, is designed to meet customers' ever-changing demands:

- ▶ functional demonstration and presentation of products
- ▶ product testing in real installation situations
- ▶ reliable technical data and proof of outputs
- ▶ continuous new developments and product enhancements.

We work closely with leading scientific research institutions, universities and test laboratories. The focus of our work is on sustainable products that operate energy-efficiently and have a long service life, with adaptable operation and manufactured using recyclable materials.



The company's own Research & Development Centre (FEC) at its headquarters in Lingen (Ems), Germany.

Kampmann International

Professional advice - worldwide



International contact

INT Kampmann GmbH

T + 49 591 7108-660 | [Kampmann.eu/contact/international](https://www.kampmann.eu/contact/international)



Contact Europe

AT Kampmann GmbH Representative Office Austria
T + 49 8141 3991-0 | [Kampmann.at](https://www.kampmann.at)

BE Kampmann GmbH Representative Office BeNeLux-France
T + 32 11 378467 | [Kampmann.be](https://www.kampmann.be)

CH Kampmann GmbH Representative Office Switzerland
T + 41 44 2836185 | [Kampmann.ch](https://www.kampmann.ch)

FR Kampmann GmbH Representative Office BeNeLux-France
T + 33 975128216 | [Kampmann.fr](https://www.kampmann.fr)

GB Kampmann UK Ltd.
T + 44 1932 228592 | [Kampmann.co.uk](https://www.kampmann.co.uk)

IE Kampmann UK Ltd.
T + 44 1932 228592 | [Kampmann.co.uk](https://www.kampmann.co.uk)

HU Kampmann GmbH Representative Office Hungary
T + 36 309 214200 | [Kampmann.hu](https://www.kampmann.hu)

IT Kampmann GmbH Representative Office Italy
T + 39 0471 930158 | [Kampmann.it](https://www.kampmann.it)

LU Kampmann GmbH Representative Office BeNeLux-France
T + 32 11 378467 | [Kampmann.lu](https://www.kampmann.lu)

NL Kampmann GmbH Representative Office Netherlands
T + 31 703114174 | [Kampmann.nl](https://www.kampmann.nl)

PL Kampmann Polska Sp. z o. o.
T + 48 24 7219185 | [Kampmann.pl](https://www.kampmann.pl)

RU Kampmann GmbH Representative Office Moscow
T + 7 495 3630244 | [Kampmann.ru](https://www.kampmann.ru)



Contact North America

CA Kampmann Heating, Cooling, Ventilation Ltd.
T + 1 604 362 0180 | [Kampmann.ca](https://www.kampmann.ca)

Kampmann Online

You will find the best solutions and best support for your everyday business at Kampmann.ca



► Products

A wealth of filter options quickly and easily limits the Kampmann product range. In addition to the extensive product information, the product configurator enables configuration even with limited available data, from the product group to final article number.

► Solutions

Differentiated by building and type of use, designers obtain tailor-made solutions and planning-relevant information, such as technical documentation or current guidelines.

► Service

Kampmann is always on hand in an advisory capacity to ensure that your project runs seamlessly throughout all stages of your project – from efficiency calculations on green building projects to on-site support.

Social Media

- [Linkedin.com/company/kampmann-gmbh](https://www.linkedin.com/company/kampmann-gmbh)
- [Twitter.com/kampmannngmbh](https://twitter.com/kampmannngmbh)
- [Facebook.com/kampmann.de](https://www.facebook.com/kampmann.de)
- [Youtube.com/user/kampmannlingen](https://www.youtube.com/user/kampmannlingen)



www.kampmann.ca/products

KAMPMANN **NOVA** **EMCO**

KAMPMANN Heating, Cooling,
Ventilation Ltd
1628 West 1st Avenue, Suite #221
VANCOUVER, BC V6J 1G1
CANADA

T +1 604 362-1080
E info@kampmann.ca
W Kampmann.ca