

Baseboard HK

Fan Coil 2-pipe

Genau
mein
Klima.

KAMPMANN

BASEBOARD HK

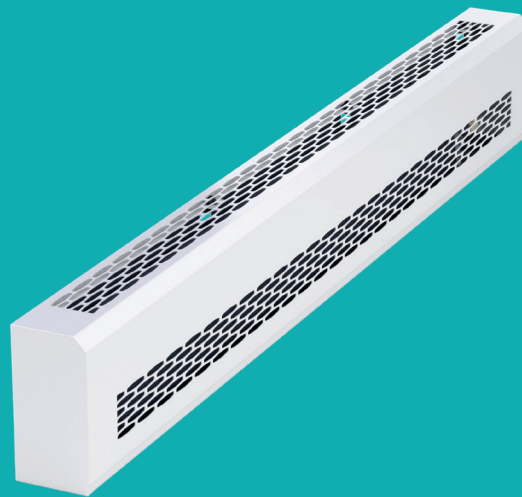
for heating and cooling

extremely quiet

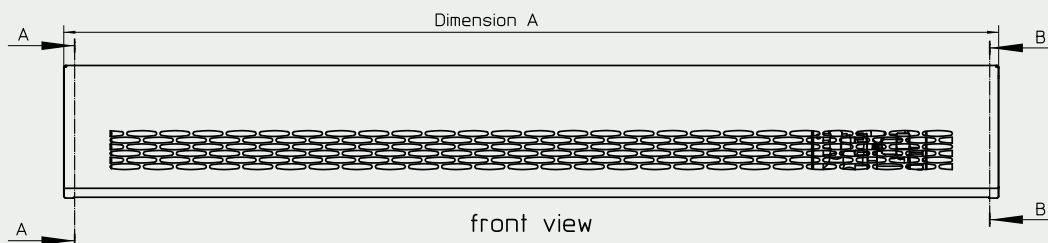
space-saving dimensions

quality made in Germany

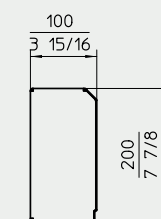
for residential area



Front view

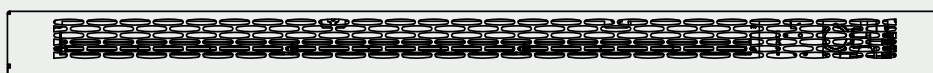


Side view



side view

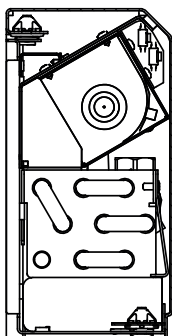
Top view



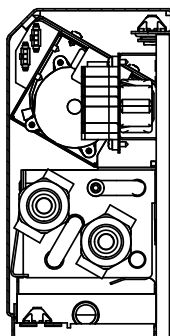
top view

Sectional view

cross section A-A
1:2



cross section B-B
1:2



Dimensions

metric [mm]			imperial [in]		
L	W	H	L	W	H
820			32 9/32		
1040			40 15/16		
1240			48 13/16		
1450			57 3/32		
1660			65 23/64		
1960	100	200	77 11/64	3 15/16	7 7/8
2160			85 3/64		
2380			93 45/64		
2580			101 37/64		
2790			109 27/32		
3000			118 7/64		

Technical data - heating metric

LPHW 55/50°C, room temperature 20°C, 48% rel. humidity

820 mm						
Control voltage	V	2	4	6	8	10
SFP-Wert	Ws/m ³	1920	672	479	413	390
Air flow	m ³ /h	9	31	54	76	98
Power consumption	W	4,8	5,9	7,1	8,7	10,7
Current consumption	A	0,064	0,074	0,086	0,101	0,118
Sound pressure level	dB(A)	18	24	32	39	45
Sound power level	dB(A)	26	32	40	47	53
Heat output	W	91	267	411	538	653
Outlet air temperatur	°C	50,6	45,7	43,0	41,3	40,0
Mass flow	l/h	15	47	71	94	113
Pressure loss	kPa	0,005	0,042	0,091	0,150	0,209

1040 mm						
Control voltage	V	2	4	6	8	10
SFP-Wert	Ws/m ³	1196	461	362	344	358
Air flow	m ³ /h	13	47	81	114	148
Power consumption	W	4,5	6,0	8,1	10,9	14,7
Current consumption	A	0,061	0,075	0,093	0,117	0,147
Sound pressure level	dB(A)	20	26	33	41	47
Sound power level	dB(A)	28	34	41	49	55
Heat output	W	137	399	615	806	980
Outlet air temperatur	°C	50,7	45,5	43,0	41,3	40,0
Mass flow	l/h	23	68	105	139	169
Pressure loss	kPa	0,016	0,111	0,247	0,409	0,584

1240 mm						
Control voltage	V	2	4	6	8	10
SFP-Wert	Ws/m ³	924	337	250	224	220
Air flow	m ³ /h	18	63	107	152	197
Power consumption	W	4,6	5,9	7,5	9,5	12,1
Current consumption	A	0,057	0,068	0,082	0,099	0,121
Sound pressure level	dB(A)	21	27	35	42	48
Sound power level	dB(A)	29	35	43	50	56
Heat output	W	183	534	821	1074	1307
Outlet air temperatur	°C	50,6	45,7	43,0	41,2	40,0
Mass flow	l/h	30	94	143	184	225
Pressure loss	kPa	0,032	0,248	0,527	0,833	1,202

1450						
Control voltage	V	2	4	6	8	10
SFP-Wert	Ws/m ³	924	337	250	224	220
Air flow	m ³ /h	22	78	133	188	244
Power consumption	W	5,7	7,3	9,2	11,7	14,9
Current consumption	A	0,070	0,084	0,102	0,123	0,149
Sound pressure level	dB(A)	22	28	36	43	49
Sound power level	dB(A)	30	36	44	51	57
Heat output	W	226	659	1016	1330	1616
Outlet air temperatur	°C	50,6	45,6	43,0	41,3	40,0
Mass flow	l/h	38	113	176	229	278
Pressure loss	kPa	0,058	0,411	0,920	1,471	2,084

Technical data - heating metric

LPHW 55/50°C, room temperature 20°C, 48% rel. humidity

1660 mm						
Control voltage	V	2	4	6	8	10
SFP-Wert	Ws/m ³	621	252	208	208	227
Air flow	m ³ /h	27	94	161	228	295
Power consumption	W	4,7	6,6	9,3	13,2	18,7
Current consumption	A	0,058	0,076	0,099	0,130	0,172
Sound pressure level	dB(A)	23	29	36	44	50
Sound power level	dB(A)	31	37	44	52	58
Heat output	W	275	801	1232	1612	1960
Outlet air temperatur	°C	50,7	45,6	43,0	41,3	40,0
Mass flow	l/h	47	139	214	278	338
Pressure loss	kPa	0,100	0,696	1,509	2,411	3,426

1960 mm						
Control voltage	V	2	4	6	8	10
SFP-Wert	Ws/m ³	621	252	208	208	227
Air flow	m ³ /h	31	110	188	266	345
Power consumption	W	5,4	7,7	10,9	15,4	21,8
Current consumption	A	0,068	0,088	0,115	0,152	0,201
Sound pressure level	dB(A)	23	29	37	44	51
Sound power level	dB(A)	31	37	45	52	59
Heat output	W	321	934	1436	1882	2287
Outlet air temperatur	°C	50,8	45,6	43,0	41,3	40,0
Mass flow	l/h	56	161	248	326	394
Pressure loss	kPa	0,167	1,091	2,345	3,843	5,381

2160 mm						
Control voltage	V	2	4	6	8	10
SFP-Wert	Ws/m ³	469	204	181	195	229
Air flow	m ³ /h	36	125	215	304	394
Power consumption	W	4,7	7,1	10,8	16,5	25,0
Current consumption	A	0,058	0,080	0,112	0,158	0,223
Sound pressure level	dB(A)	24	30	38	45	51
Sound power level	dB(A)	32	38	46	53	59
Heat output	W	367	1067	1643	2150	2614
Outlet air temperatur	°C	50,7	45,6	43,0	41,3	40,0
Mass flow	l/h	64	184	285	371	450
Pressure loss	kPa	0,233	1,529	3,344	5,361	7,560

2380 mm						
Control voltage	V	2	4	6	8	10
SFP-Wert	Ws/m ³	469	204	181	195	229
Air flow	m ³ /h	40	141	242	342	443
Power consumption	W	5,3	8,0	12,2	18,5	28,2
Current consumption	A	0,065	0,090	0,126	0,177	0,251
Sound pressure level	dB(A)	24	31	38	46	52
Sound power level	dB(A)	32	39	46	54	60
Heat output	W	413	1200	1847	2418	2940
Outlet air temperatur	°C	50,7	45,6	43,0	41,3	40,0
Mass flow	l/h	71	206	319	416	506
Pressure loss	kPa	0,315	2,082	4,519	7,273	10,313

Technical data - heating metric

LPHW 55/50°C, room temperature 20°C, 48% rel. humidity

2580 mm						
Control voltage	V	2	4	6	8	10
SFP-Wert	Ws/m ³	390	173	156	170	204
Air flow	m ³ /h	45	157	269	380	492
Power consumption	W	4,9	7,5	11,6	18,0	27,9
Current consumption	A	0,059	0,083	0,118	0,169	0,243
Sound pressure level	dB(A)	25	31	39	46	52
Sound power level	dB(A)	33	39	47	54	60
Heat output	W	458	1333	2051	2689	3267
Outlet air temperatur	°C	50,7	45,6	43,0	41,3	40,0
Mass flow	l/h	79	229	353	465	563
Pressure loss	kPa	0,411	2,725	5,881	9,629	13,520

2790 mm						
Control voltage	V	2	4	6	8	10
SFP-Wert	Ws/m ³	390	173	156	170	204
Air flow	m ³ /h	49	172	294	417	539
Power consumption	W	5,3	8,2	12,7	19,7	30,5
Current consumption	A	0,064	0,091	0,129	0,185	0,266
Sound pressure level	dB(A)	25	31	39	46	53
Sound power level	dB(A)	33	39	47	54	61
Heat output	W	502	1460	2246	2942	3579
Outlet air temperatur	°C	50,7	45,6	43,0	41,3	40,0
Mass flow	l/h	86	251	386	506	619
Pressure loss	kPa	0,525	3,495	7,503	12,140	17,353

3000 mm						
Control voltage	V	2	4	6	8	10
SFP-Wert	Ws/m ³	390	173	156	170	204
Air flow	m ³ /h	54	188	322	457	591
Power consumption	W	5,8	9,0	14,0	21,6	33,4
Current consumption	A	0,071	0,100	0,141	0,202	0,291
Sound pressure level	dB(A)	26	32	40	47	53
Sound power level	dB(A)	34	40	48	55	61
Heat output	W	550	1601	2462	3224	3920
Outlet air temperatur	°C	50,7	45,6	43,0	41,3	40,0
Mass flow	l/h	94	278	424	555	675
Pressure loss	kPa	0,658	4,495	9,532	15,398	21,812

Technical data - cooling metric

CHW 7/12°C, room temperature 27°C, 48% rel. humidity

820 mm						
Control voltage	V	2	4	6	8	10
SFP-Wert	Ws/m ³	1920	672	479	413	390
Air flow	m ³ /h	9	31	54	76	98
Power consumption	W	5	6	7	9	11
Current consumption	A	0,064	0,074	0,086	0,101	0,118
Sound pressure level	dB(A)	18	24	32	39	45
Sound power level	dB(A)	26	32	40	47	53
Total cooling output	W	63	142	217	289	357
Sensible cooling output	W	50	115	181	247	312
Outlet air temperatur	°C	10,4	16,0	16,9	17,3	17,5
Mass flow	l/h	11	24	38	50	62
Condensation	l/h	0,021	0,042	0,058	0,068	0,072
Pressure loss	kPa	0,004	0,015	0,033	0,056	0,082

1040 mm						
Control voltage	V	2	4	6	8	10
SFP-Wert	Ws/m ³	1196	461	362	344	358
Air flow	m ³ /h	13	47	81	114	148
Power consumption	W	4	6	8	11	15
Current consumption	A	0,061	0,075	0,093	0,117	0,147
Sound pressure level	dB(A)	20	26	33	41	47
Sound power level	dB(A)	28	34	41	49	55
Total cooling output	W	94	213	326	434	536
Sensible cooling output	W	75	173	271	370	468
Outlet air temperatur	°C	10,4	16,0	16,9	17,3	17,5
Mass flow	l/h	16	37	56	75	92
Condensation	l/h	0,031	0,063	0,087	0,102	0,108
Pressure loss	kPa	0,010	0,044	0,096	0,160	0,233

1240 mm						
Control voltage	V	2	4	6	8	10
SFP-Wert	Ws/m ³	924	337	250	224	220
Air flow	m ³ /h	18	63	107	152	197
Power consumption	W	5	6	7	9	12
Current consumption	A	0,057	0,068	0,082	0,099	0,121
Sound pressure level	dB(A)	21	27	35	42	48
Sound power level	dB(A)	29	35	43	50	56
Total cooling output	W	125	284	435	578	714
Sensible cooling output	W	100	231	362	493	624
Outlet air temperatur	°C	10,4	16,0	16,9	17,3	17,5
Mass flow	l/h	22	49	75	100	123
Condensation	l/h	0,041	0,084	0,116	0,136	0,144
Pressure loss	kPa	0,022	0,093	0,200	0,333	0,486

1450 mm						
Control voltage	V	2	4	6	8	10
SFP-Wert	Ws/m ³	924	337	250	224	220
Air flow	m ³ /h	22	78	133	188	244
Power consumption	W	6	7	9	12	15
Current consumption	A	0,070	0,084	0,102	0,123	0,149
Sound pressure level	dB(A)	22	28	36	43	49
Sound power level	dB(A)	30	36	44	51	57
Total cooling output	W	155	351	538	716	884
Sensible cooling output	W	123	286	448	610	772
Outlet air temperatur	°C	10,4	16,0	16,9	17,3	17,5
Mass flow	l/h	27	61	93	124	153
Condensation	l/h	0,051	0,105	0,144	0,168	0,178
Pressure loss	kPa	0,039	0,165	0,353	0,587	0,857

Technical data - cooling metric

CHW 7/12°C, room temperature 27°C, 48% rel. humidity

1660 mm						
Control voltage	V	2	4	6	8	10
SFP-Wert	Ws/m ³	621	252	208	208	227
Air flow	m ³ /h	27	94	161	228	295
Power consumption	W	5	7	9	13	19
Current consumption	A	0,058	0,076	0,099	0,130	0,172
Sound pressure level	dB(A)	23	29	36	44	50
Sound power level	dB(A)	31	37	44	52	58
Total cooling output	W	188	426	652	867	1072
Sensible cooling output	W	150	346	543	740	936
Outlet air temperatur	°C	10,4	16,0	16,9	17,3	17,5
Mass flow	l/h	32	73	113	150	185
Condensation	l/h	0,062	0,127	0,174	0,204	0,216
Pressure loss	kPa	0,064	0,272	0,582	0,967	1,410

1960 mm						
Control voltage	V	2	4	6	8	10
SFP-Wert	Ws/m ³	621	252	208	208	227
Air flow	m ³ /h	31	110	188	266	345
Power consumption	W	5	8	11	15	22
Current consumption	A	0,068	0,088	0,115	0,152	0,201
Sound pressure level	dB(A)	23	29	37	44	51
Sound power level	dB(A)	31	37	45	52	59
Total cooling output	W	220	497	761	1012	1250
Sensible cooling output	W	175	404	633	863	1092
Outlet air temperatur	°C	10,4	16,0	16,9	17,3	17,5
Mass flow	l/h	38	86	131	175	216
Condensation	l/h	0,072	0,148	0,203	0,238	0,252
Pressure loss	kPa	0,102	0,433	0,924	1,534	2,234

2160 mm						
Control voltage	V	2	4	6	8	10
SFP-Wert	Ws/m ³	469	204	181	195	229
Air flow	m ³ /h	36	125	215	304	394
Power consumption	W	5	7	11	16	25
Current consumption	A	0,058	0,080	0,112	0,158	0,223
Sound pressure level	dB(A)	24	30	38	45	51
Sound power level	dB(A)	32	38	46	53	59
Total cooling output	W	251	568	869	1157	1429
Sensible cooling output	W	199	462	724	986	1248
Outlet air temperatur	°C	10,4	16,0	16,9	17,3	17,5
Mass flow	l/h	43	98	150	200	247
Condensation	l/h	0,082	0,169	0,232	0,272	0,288
Pressure loss	kPa	0,144	0,612	1,304	2,164	3,150

2380						
Control voltage	V	2	4	6	8	10
SFP-Wert	Ws/m ³	469	204	181	195	229
Air flow	m ³ /h	40	141	242	342	443
Power consumption	W	5	8	12	19	28
Current consumption	A	0,065	0,090	0,126	0,177	0,251
Sound pressure level	dB(A)	24	31	38	46	52
Sound power level	dB(A)	32	39	46	54	60
Total cooling output	W	282	639	978	1301	1607
Sensible cooling output	W	224	519	814	1109	1404
Outlet air temperatur	°C	10,4	16,0	16,9	17,3	17,5
Mass flow	l/h	49	110	169	225	277
Condensation	l/h	0,092	0,190	0,261	0,306	0,324
Pressure loss	kPa	0,198	0,840	1,787	2,964	4,313

Technical data - cooling metric

CHW 7/12°C, room temperature 27°C, 48% rel. humidity

2580 mm						
Control voltage	V	2	4	6	8	10
SFP-Wert	Ws/m ³	390	173	156	170	204
Air flow	m ³ /h	45	157	269	380	492
Power consumption	W	5	8	12	18	28
Current consumption	A	0,059	0,083	0,118	0,169	0,243
Sound pressure level	dB(A)	25	31	39	46	52
Sound power level	dB(A)	33	39	47	54	60
Total cooling output	W	314	710	1087	1446	1786
Sensible cooling output	W	249	577	905	1233	1560
Outlet air temperatur	°C	10,4	16,0	16,9	17,3	17,5
Mass flow	l/h	54	122	188	250	308
Condensation	l/h	0,103	0,211	0,290	0,340	0,360
Pressure loss	kPa	0,261	1,105	2,351	3,897	5,669

2790 mm						
Control voltage	V	2	4	6	8	10
SFP-Wert	Ws/m ³	390	173	156	170	204
Air flow	m ³ /h	49	172	294	417	539
Power consumption	W	5	8	13	20	31
Current consumption	A	0,064	0,091	0,129	0,185	0,266
Sound pressure level	dB(A)	25	31	39	46	53
Sound power level	dB(A)	33	39	47	54	61
Total cooling output	W	343	777	1190	1583	1956
Sensible cooling output	W	273	632	991	1350	1709
Outlet air temperatur	°C	10,4	16,0	16,9	17,3	17,5
Mass flow	l/h	59	134	205	273	338
Condensation	l/h	0,112	0,231	0,318	0,372	0,394
Pressure loss	kPa	0,334	1,412	3,003	4,976	7,237

3000 mm						
Control voltage	V	2	4	6	8	10
SFP-Wert	Ws/m ³	390	173	156	170	204
Air flow	m ³ /h	54	188	322	457	591
Power consumption	W	6	9	14	22	33
Current consumption	A	0,071	0,100	0,141	0,202	0,291
Sound pressure level	dB(A)	26	32	40	47	53
Sound power level	dB(A)	34	40	48	55	61
Total cooling output	W	376	851	1304	1735	2143
Sensible cooling output	W	299	692	1086	1479	1872
Outlet air temperatur	°C	10,4	16,0	16,9	17,3	17,5
Mass flow	l/h	65	147	225	299	370
Condensation	l/h	0,123	0,253	0,348	0,408	0,432
Pressure loss	kPa	0,425	1,795	3,816	6,321	9,189

Technical data - heating imperial

LPHW 131/122°F, room temperature 68°F, 48% rel. humidity

32 9/32 in						
Control voltage	V	2	4	6	8	10
Air flow	cfm	5	18	32	45	58
Power consumption	W	5	6	7	9	11
Current consumption	A	0,064	0,074	0,086	0,101	0,118
Sound pressure level	dB(A)	18	24	32	39	45
Sound power level	dB(A)	26	32	40	47	53
Heat output	BTU	312	912	1402	1838	2231
Outlet air temperatur	°F	123,1	114,2	109,4	106,3	104,0
Mass flow	GPM	0,07	0,21	0,31	0,41	0,50
Pressure loss	feet H ₂ O	0,002	0,014	0,030	0,050	0,070

40 15/16 in						
Control voltage	V	2	4	6	8	10
Air flow	cfm	8	28	47	67	87
Power consumption	W	4	6	8	11	15
Current consumption	A	0,061	0,075	0,093	0,117	0,147
Sound pressure level	dB(A)	20	26	33	41	47
Sound power level	dB(A)	28	34	41	49	55
Heat output	BTU	469	1363	2099	2752	3346
Outlet air temperatur	°F	123,3	114,0	109,3	106,3	104,0
Mass flow	GPM	0,10	0,30	0,46	0,61	0,74
Pressure loss	feet H ₂ O	0,006	0,037	0,083	0,137	0,195

48 13/16 in						
Control voltage	V	2	4	6	8	10
Air flow	cfm	11	37	63	90	116
Power consumption	W	5	6	7	9	12
Current consumption	A	0,057	0,068	0,082	0,099	0,121
Sound pressure level	dB(A)	21	27	35	42	48
Sound power level	dB(A)	29	35	43	50	56
Heat output	BTU	624	1824	2804	3666	4461
Outlet air temperatur	°F	123,1	114,2	109,4	106,2	104,0
Mass flow	GPM	0,13	0,41	0,63	0,81	0,99
Pressure loss	feet H ₂ O	0,011	0,083	0,176	0,279	0,402

57 3/32 in						
Control voltage	V	2	4	6	8	10
Air flow	cfm	13	46	78	111	143
Power consumption	W	6	7	9	12	15
Current consumption	A	0,070	0,084	0,102	0,123	0,149
Sound pressure level	dB(A)	22	28	36	43	49
Sound power level	dB(A)	30	36	44	51	57
Heat output	BTU	773	2251	3470	4540	5519
Outlet air temperatur	°F	123,1	114,0	109,4	106,3	103,9
Mass flow	GPM	0,17	0,50	0,78	1,01	1,22
Pressure loss	feet H ₂ O	0,019	0,138	0,308	0,492	0,697

Technical data - heating imperial

LPHW 131/122°F, room temperature 68°F, 48% rel. humidity

65 23/64 in						
Control voltage	V	2	4	6	8	10
Air flow	cfm	16	55	95	134	174
Power consumption	W	5	7	9	13	19
Current consumption	A	0,058	0,076	0,099	0,130	0,172
Sound pressure level	dB(A)	23	29	36	44	50
Sound power level	dB(A)	31	37	44	52	58
Heat output	BTU	938	2733	4207	5504	6692
Outlet air temperatur	°F	123,3	114,1	109,4	106,3	104,0
Mass flow	GPM	0,21	0,61	0,94	1,22	1,49
Pressure loss	feet H ₂ O	0,034	0,233	0,505	0,806	1,146

77 11/64 in						
Control voltage	V	2	4	6	8	10
Air flow	cfm	19	65	111	157	203
Power consumption	W	5	8	11	15	22
Current consumption	A	0,068	0,088	0,115	0,152	0,201
Sound pressure level	dB(A)	23	29	37	44	51
Sound power level	dB(A)	31	37	45	52	59
Heat output	BTU	1097	3187	4904	6427	7808
Outlet air temperatur	°F	123,4	114,1	109,4	106,3	104,0
Mass flow	GPM	0,25	0,71	1,09	1,44	1,73
Pressure loss	feet H ₂ O	0,056	0,365	0,785	1,286	1,800

85 3/64 in						
Control voltage	V	2	4	6	8	10
Air flow	cfm	21	74	126	179	232
Power consumption	W	5	7	11	16	25
Current consumption	A	0,058	0,080	0,112	0,158	0,223
Sound pressure level	dB(A)	24	30	38	45	51
Sound power level	dB(A)	32	38	46	53	59
Heat output	BTU	1253	3642	5609	7341	8923
Outlet air temperatur	°F	123,3	114,1	109,4	106,3	104,0
Mass flow	GPM	0,28	0,81	1,25	1,63	1,98
Pressure loss	feet H ₂ O	0,078	0,512	1,119	1,794	2,529

93 45/64 in						
Control voltage	V	2	4	6	8	10
Air flow	cfm	24	83	142	202	261
Power consumption	W	5	8	12	19	28
Current consumption	A	0,065	0,090	0,126	0,177	0,251
Sound pressure level	dB(A)	24	31	38	46	52
Sound power level	dB(A)	32	39	46	54	60
Heat output	BTU	1409	4096	6306	8256	10038
Outlet air temperatur	°F	123,3	114,1	109,4	106,3	104,0
Mass flow	GPM	0,31	0,91	1,40	1,83	2,23
Pressure loss	feet H ₂ O	0,106	0,697	1,512	2,433	3,450

Technical data - heating imperial

LPHW 131/122°F, room temperature 68°F, 48% rel. humidity

101 37/64 in						
Control voltage	V	2	4	6	8	10
Air flow	cfm	26	92	158	224	290
Power consumption	W	5	8	12	18	28
Current consumption	A	0,059	0,083	0,118	0,169	0,243
Sound pressure level	dB(A)	25	31	39	46	52
Sound power level	dB(A)	33	39	47	54	60
Heat output	BTU	1565	4550	7003	9179	11154
Outlet air temperatur	°F	123,3	114,1	109,4	106,3	104,0
Mass flow	GPM	0,35	1,01	1,55	2,05	2,48
Pressure loss	feet H ₂ O	0,138	0,912	1,967	3,222	4,523

109 27/32 in						
Control voltage	V	2	4	6	8	10
Air flow	cfm	29	101	173	245	317
Power consumption	W	5	8	13	20	31
Current consumption	A	0,064	0,091	0,129	0,185	0,266
Sound pressure level	dB(A)	25	31	39	46	53
Sound power level	dB(A)	33	39	47	54	61
Heat output	BTU	1713	4984	7668	10044	12220
Outlet air temperatur	°F	123,3	114,1	109,4	106,3	104,0
Mass flow	GPM	0,38	1,11	1,70	2,23	2,72
Pressure loss	feet H ₂ O	0,176	1,169	2,510	4,062	5,806

118 7/64 in						
Control voltage	V	2	4	6	8	10
Air flow	cfm	32	111	190	269	348
Power consumption	W	6	9	14	22	33
Current consumption	A	0,071	0,100	0,141	0,202	0,291
Sound pressure level	dB(A)	26	32	40	47	53
Sound power level	dB(A)	34	40	48	55	61
Heat output	BTU	1877	5466	8405	11008	13384
Outlet air temperatur	°F	123,3	114,1	109,4	106,3	104,0
Mass flow	GPM	0,41	1,22	1,87	2,44	2,97
Pressure loss	feet H ₂ O	0,220	1,504	3,189	5,152	7,297

Technical data - cooling imperial

CHW 44,6/53,6°F, room temperature 80,6°F, 48% rel. humidity

32 9/32 in						
Control voltage	V	2	4	6	8	10
Air flow	cfm	5	18	32	45	58
Power consumption	W	4,8	5,9	7,1	8,7	10,7
Current consumption	A	0,064	0,074	0,086	0,101	0,118
Sound pressure level	dB(A)	18	24	32	39	45
Sound power level	dB(A)	26	32	40	47	53
Total cooling output	BTU	214	484	742	987	1219
Sensible cooling output	BTU	170	394	618	842	1065
Outlet air temperatur	°F	50,8	60,8	62,5	63,2	63,6
Mass flow	GPM	0,05	0,11	0,17	0,22	0,27
Condensation	GPM	0,0001	0,0002	0,0003	0,0003	0,0003
Pressure loss	feet H ₂ O	0,001	0,005	0,011	0,019	0,027

40 15/16 in						
Control voltage	V	2	4	6	8	10
Air flow	cfm	8	28	47	67	87
Power consumption	W	4,5	6,0	8,1	10,9	14,7
Current consumption	A	0,061	0,075	0,093	0,117	0,147
Sound pressure level	dB(A)	20	26	33	41	47
Sound power level	dB(A)	28	34	41	49	55
Total cooling output	BTU	321	727	1113	1481	1829
Sensible cooling output	BTU	255	591	927	1262	1598
Outlet air temperatur	°F	50,8	60,8	62,5	63,2	63,6
Mass flow	GPM	0,07	0,16	0,25	0,33	0,41
Condensation	GPM	0,0001	0,0003	0,0004	0,0004	0,0005
Pressure loss	feet H ₂ O	0,003	0,015	0,032	0,053	0,078

48 13/16 in						
Control voltage	V	2	4	6	8	10
Air flow	cfm	11	37	63	90	116
Power consumption	W	4,6	5,9	7,5	9,5	12,1
Current consumption	A	0,057	0,068	0,082	0,099	0,121
Sound pressure level	dB(A)	21	27	35	42	48
Sound power level	dB(A)	29	35	43	50	56
Total cooling output	BTU	428	969	1484	1974	2439
Sensible cooling output	BTU	340	788	1236	1683	2131
Outlet air temperatur	°F	50,8	60,8	62,5	63,2	63,6
Mass flow	GPM	0,10	0,22	0,33	0,44	0,54
Condensation	GPM	0,0002	0,0004	0,0005	0,0006	0,0006
Pressure loss	feet H ₂ O	0,007	0,031	0,067	0,111	0,163

57 3/32 in						
Control voltage	V	2	4	6	8	10
Air flow	cfm	13	46	78	111	143
Power consumption	W	5,7	7,3	9,2	11,7	14,9
Current consumption	A	0,070	0,084	0,102	0,123	0,149
Sound pressure level	dB(A)	22	28	36	43	49
Sound power level	dB(A)	30	36	44	51	57
Total cooling output	BTU	530	1199	1837	2443	3018
Sensible cooling output	BTU	421	975	1529	2083	2637
Outlet air temperatur	°F	50,8	60,8	62,5	63,2	63,6
Mass flow	GPM	0,12	0,27	0,41	0,54	0,67
Condensation	GPM	0,0002	0,0005	0,0006	0,0007	0,0008
Pressure loss	feet H ₂ O	0,013	0,055	0,118	0,196	0,287

Technical data - cooling imperial

CHW 44,6/53,6°F, room temperature 80,6°F, 48% rel. humidity

65 23/64 in						
Control voltage	V	2	4	6	8	10
Air flow	cfm	16	55	95	134	174
Power consumption	W	4,7	6,6	9,3	13,2	18,7
Current consumption	A	0,058	0,076	0,099	0,130	0,172
Sound pressure level	dB(A)	23	29	36	44	50
Sound power level	dB(A)	31	37	44	52	58
Total cooling output	BTU	642	1453	2226	2961	3658
Sensible cooling output	BTU	511	1182	1854	2525	3196
Outlet air temperatur	°F	50,8	60,8	62,5	63,2	63,6
Mass flow	GPM	0,14	0,32	0,50	0,66	0,81
Condensation	GPM	0,0003	0,0006	0,0008	0,0009	0,0010
Pressure loss	feet H ₂ O	0,021	0,091	0,195	0,324	0,472

77 11/64 in						
Control voltage	V	2	4	6	8	10
Air flow	cfm	19	65	111	157	203
Power consumption	W	5,4	7,7	10,9	15,4	21,8
Current consumption	A	0,068	0,088	0,115	0,152	0,201
Sound pressure level	dB(A)	23	29	37	44	51
Sound power level	dB(A)	31	37	45	52	59
Total cooling output	BTU	749	1696	2597	3455	4268
Sensible cooling output	BTU	596	1379	2162	2946	3729
Outlet air temperatur	°F	50,8	60,8	62,5	63,2	63,6
Mass flow	GPM	0,17	0,38	0,58	0,77	0,95
Condensation	GPM	0,0003	0,0007	0,0009	0,0010	0,0011
Pressure loss	feet H ₂ O	0,034	0,145	0,309	0,513	0,747

85 3/64 in						
Control voltage	V	2	4	6	8	10
Air flow	cfm	21	74	126	179	232
Power consumption	W	4,7	7,1	10,8	16,5	25,0
Current consumption	A	0,058	0,080	0,112	0,158	0,223
Sound pressure level	dB(A)	24	30	38	45	51
Sound power level	dB(A)	32	38	46	53	59
Total cooling output	BTU	857	1938	2969	3949	4878
Sensible cooling output	BTU	681	1576	2471	3367	4262
Outlet air temperatur	°F	50,8	60,8	62,5	63,2	63,6
Mass flow	GPM	0,19	0,43	0,66	0,88	1,09
Condensation	GPM	0,0004	0,0007	0,0010	0,0012	0,0013
Pressure loss	feet H ₂ O	0,048	0,205	0,436	0,724	1,054

93 45/64 in						
Control voltage	V	2	4	6	8	10
Air flow	cfm	24	83	142	202	261
Power consumption	W	5,3	8,0	12,2	18,5	28,2
Current consumption	A	0,065	0,090	0,126	0,177	0,251
Sound pressure level	dB(A)	24	31	38	46	52
Sound power level	dB(A)	32	39	46	54	60
Total cooling output	BTU	964	2180	3340	4442	5488
Sensible cooling output	BTU	766	1773	2780	3787	4794
Outlet air temperatur	°F	50,8	60,8	62,5	63,2	63,6
Mass flow	GPM	0,21	0,49	0,74	0,99	1,22
Condensation	GPM	0,0004	0,0008	0,0012	0,0013	0,0014
Pressure loss	feet H ₂ O	0,066	0,281	0,598	0,992	1,443

Technical data - cooling imperial

CHW 44,6/53,6°F, room temperature 80,6°F, 48% rel. humidity

101 37/64 in						
Control voltage	V	2	4	6	8	10
Air flow	cfm	26	92	158	224	290
Power consumption	W	4,9	7,5	11,6	18,0	27,9
Current consumption	A	0,059	0,083	0,118	0,169	0,243
Sound pressure level	dB(A)	25	31	39	46	52
Sound power level	dB(A)	33	39	47	54	60
Total cooling output	BTU	1071	2422	3711	4936	6097
Sensible cooling output	BTU	851	1970	3089	4208	5327
Outlet air temperatur	°F	50,8	60,8	62,5	63,2	63,6
Mass flow	GPM	0,24	0,54	0,83	1,10	1,36
Condensation	GPM	0,0005	0,0009	0,0013	0,0015	0,0016
Pressure loss	feet H ₂ O	0,087	0,370	0,787	1,304	1,897

109 27/32 in						
Control voltage	V	2	4	6	8	10
Air flow	cfm	29	101	173	245	317
Power consumption	W	5,3	8,2	12,7	19,7	30,5
Current consumption	A	0,064	0,091	0,129	0,185	0,266
Sound pressure level	dB(A)	25	31	39	46	53
Sound power level	dB(A)	33	39	47	54	61
Total cooling output	BTU	1172	2652	4063	5405	6677
Sensible cooling output	BTU	932	2157	3383	4608	5833
Outlet air temperatur	°F	50,8	60,8	62,5	63,2	63,6
Mass flow	GPM	0,26	0,59	0,90	1,20	1,49
Condensation	GPM	0,0005	0,0010	0,0014	0,0016	0,0017
Pressure loss	feet H ₂ O	0,112	0,473	1,005	1,665	2,421

118 7/64 in						
Control voltage	V	2	4	6	8	10
Air flow	cfm	32	111	190	269	348
Power consumption	W	5,8	9,0	14,0	21,6	33,4
Current consumption	A	0,071	0,100	0,141	0,202	0,291
Sound pressure level	dB(A)	26	32	40	47	53
Sound power level	dB(A)	34	40	48	55	61
Total cooling output	BTU	1285	2907	4453	5923	7317
Sensible cooling output	BTU	1021	2364	3707	5050	6393
Outlet air temperatur	°F	50,8	60,8	62,5	63,2	63,6
Mass flow	GPM	0,29	0,65	0,99	1,32	1,63
Condensation	GPM	0,0005	0,0011	0,0015	0,0018	0,0019
Pressure loss	feet H ₂ O	0,142	0,601	1,277	2,115	3,074