

Fan-assisted Baseboard and Slimline Convectors

Heating & Cooling

Baseboard HK

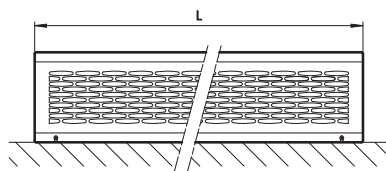
Baseboard fan-assisted
heating & cooling



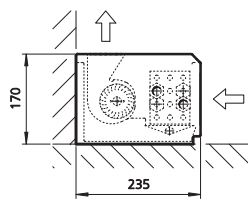
Product details

- ▶ High-quality casing from powder-coated galvanized steel with perforations for supply/return-air.
 - ▶ Chassis made from galvanized steel, with fixing lugs
 - ▶ Condensate tray, made from galvanized steel, with additional epoxy-coating
 - ▶ Ultra-quiet, energy saving EC-tangential fan with 24 V motor
 - ▶ High capacity copper/aluminium coil, max. working pressure 10 bar, at 120 °C (248 °F); connections, ½" fem. BSP (NPT adaptors supplied separately)
 - ▶ BMS interface: power supply: 24 V (class 2 only); fan speed control, 20–100% via 0–10 V BMS signal
 - ▶ Units tested to EN 16430 and certified against UL/cUL 1995 and CSA 22.2 No.236
-
- ▶ Heat output (based on 80% fan speed, water temperatures 120/100 °F, room air temperature 70 °F) = 1.1–7 MBH
 - ▶ Total cooling output (based on 2-pipe units, 80% fan speed, water temperatures 44/54 °F, room air temperature 75 °F, relative humidity = 50%) = 0.8–4.9 MBH

Dimensions



Front view



Cross section

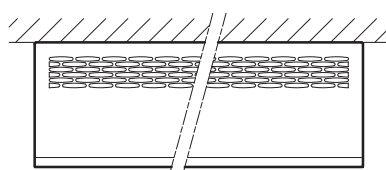
Depth: 235 mm (9.25")

Height: 170 mm (6.7")

Lengths (inc. casing):

1000, 1200, 1700, 2000, 2500,
2600, 3000 mm

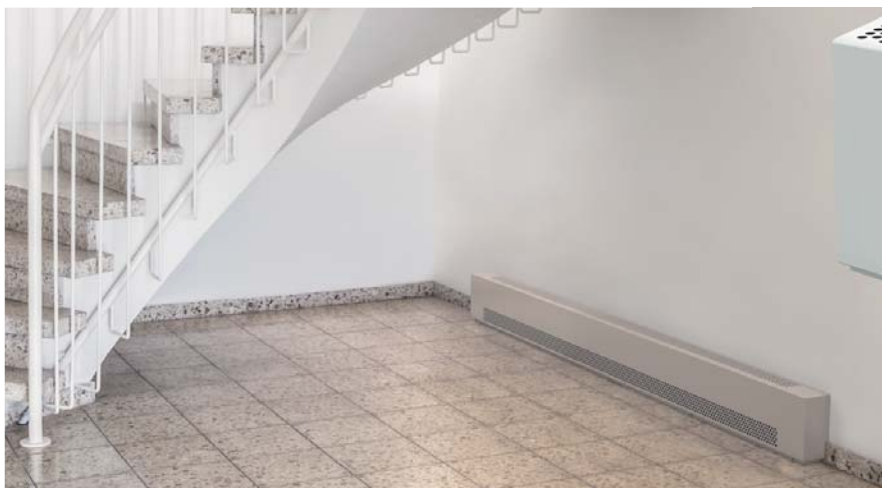
(39.37", 47.24", 66.93", 78.74",
98.42", 102.36", 118.11")



Top view

Baseboard QK

Baseboard fan-assisted heating
for low-water temperatures

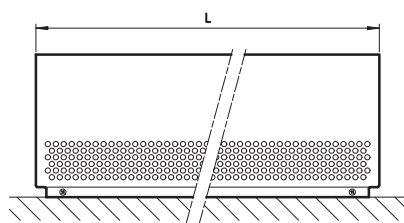


Product details

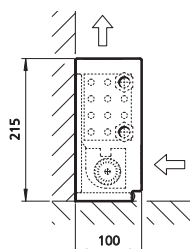
- ▶ High-quality casing from powder-coated galvanized steel with perforations for supply/return-air.
- ▶ Chassis made from galvanized steel, with fixing lugs
- ▶ Ultra-quiet, energy saving EC-tangential fan with 24 V motor
- ▶ High capacity copper/aluminium coil, max. working pressure 10 bar, at 120 °C (248 °F); connections, ½" fem. BSP (NPT adaptors supplied separately)
- ▶ BMS interface: power supply: 24 V (class 2 only); fan speed control, 20–100% via 0–10 V BMS signal
- ▶ Units tested to EN 16430 and certified against UL/cUL 1995 and CSA 22.2 No.236

- ▶ Heat output (based on 80% fan speed, water temperatures 120/100 °F) = 1–6.2 MBH (shortest to longest)

Dimensions



Front view



Cross section

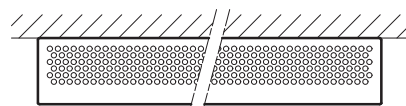
Depth: 100 mm (4")

Height: 215 mm (8.46")

Lengths (inc. casing):

850, 1050, 1250, 1450, 1650,
1800, 2000, 2200, 2400, 2600,
2800, 3000 mm

(33.46", 41.34", 49.21", 57.09",
64.96", 70.87", 78.74", 86.61",
94.49", 102.36", 110.24", 118.11")



Top view

Ceiling HK

Slim fan-assisted
convector unit

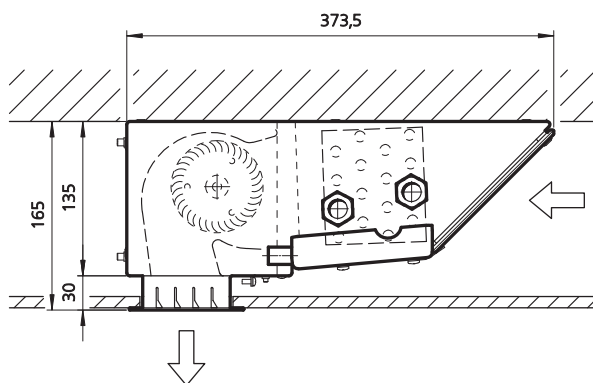


**2- or 4-pipe, for
recessed ceiling
mounted installation.**

Product details

- ▶ Chassis made from galvanized steel, with fixing lugs
 - ▶ Linear aluminium outlet grille/frame
 - ▶ Ultra-quiet, energy saving EC-tangential fan with 24 V motor
 - ▶ High capacity copper/aluminium coil, max. working pressure 10 bar, at 120 °C (248 °F); connections, ½" fem. BSP (NPT adaptors supplied separately)
 - ▶ Condensate tray, made from galvanized steel, with additional epoxy-coating and insulation
 - ▶ BMS interface: power supply: 24 V (class 2 only); fan speed control, 20–100% via 0–10 V BMS signal
 - ▶ Units tested to EN 16430 and certified against UL/cUL 1995 and CSA 22.2 No.236
-
- ▶ Heat output (based on 2-pipe units, 80% fan speed, water temperatures 120/100 °F) = 4.6 - 15.5 MBH (shortest to longest)
 - ▶ Total cooling output (based on 2-pipe units, 80% fan speed, water temperatures 44/54 °F) = 3.1–10.5 MBH

Dimensions



Depth: 400 mm (15.75")

Height: 140 mm (5.51")

Lengths (chassis only):

800, 1000, 1200, 1500,
1700, 1900, 2100, 2300 mm

(31.5", 39.37", 47.24", 59.05",
66.93", 74.8", 82.68", 90.55")

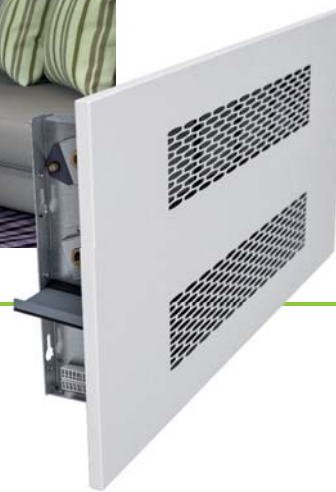
Cross section

Wall HK

Slim fan-assisted convector unit



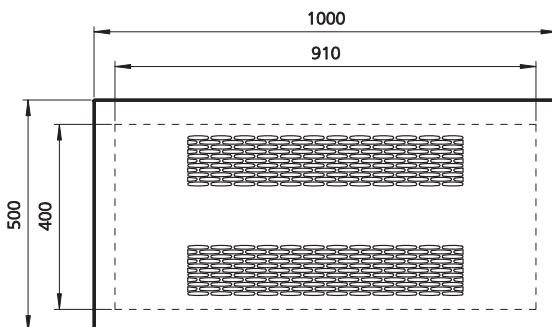
2- or 4-pipe, for wall mounted installation. Optional casing for surface mounting or grilles/front-panel for recessed mounting.



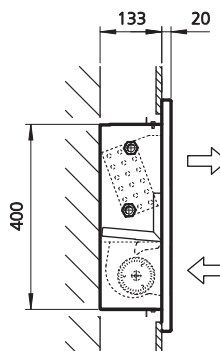
Product details

- ▶ Chassis made from galvanized steel, with fixing lugs
 - ▶ Galvanized steel casing powder coated to any RAL colour
 - ▶ Ultra-quiet, energy saving EC-tangential fan with 24 V motor
 - ▶ High capacity copper/aluminium coil, max. working pressure 10 bar, at 120 °C (248 °F); connections, ½" fem. BSP (NPT adaptors supplied separately)
 - ▶ Condensate tray, made from galvanized steel, with additional epoxy-coating and insulation
 - ▶ BMS interface: power supply: 24 V (class 2 only); fan speed control, 20–100% via 0–10 V BMS signal
 - ▶ Units tested to EN 16430 and certified against UL/cUL 1995 and CSA 22.2 No.236
-
- ▶ Heat output (based on 2-pipe units, 80% fan speed, water temperatures 120/100 °F) = 4.6–15.5 MBH (shortest to longest)
 - ▶ Total cooling output (based in 2-pipe units, 80% fan speed, water temperatures 44/54 °F) = 3.1–10.5 MBH (shortest to longest)

Dimensions



Front view



Cross section

Depth: 140 mm (5.51")

Height: 400 mm (15.75")

Lengths (inc. casing):

1000, 1200, 1400, 1700,
1900, 2100, 2300, 2500 mm

(39.37", 47.24", 55.12", 66.93",
74.8", 82.68", 90.55", 98.42")

Kampmann.ca

Kampmann GmbH
Friedrich-Ebert-Str. 128–130
49811 Lingen (Ems)
Germany

T +49 591 7108-660
T +49 591 7108-173
E export@kampmann.de
W Kampmann.de

Kampmann Heating, Cooling, Ventilation Ltd.
600 - 890 West Pender Street
Vancouver BC, V6C 1J9
Canada

T +1 604 362 0180
F +1 604 687 1327
E info@kampmann.ca
W Kampmann.ca